

Registered number: 05794916
Charity number: 1114495

WEST OF ENGLAND SPORT TRUST
(A COMPANY LIMITED BY GUARANTEE)

TRUSTEES' REPORT AND FINANCIAL STATEMENTS
FOR THE YEAR ENDED 31 MARCH 2023

**WEST OF ENGLAND SPORT TRUST
(A COMPANY LIMITED BY GUARANTEE)**

CONTENTS

	Page
Reference and Administrative Details of the Company, its Trustees and Advisers	1
Trustees' Report	2 - 13
Trustees' Responsibilities Statement	14
Independent Auditors' Report on the Financial Statements	15 - 18
Statement of Financial Activities	19
Balance Sheet	20
Statement of Cash Flows	21
Notes to the Financial Statements	22 - 35

**WEST OF ENGLAND SPORT TRUST
(A COMPANY LIMITED BY GUARANTEE)**

**REFERENCE AND ADMINISTRATIVE DETAILS OF THE CHARITY, ITS TRUSTEES AND ADVISERS
FOR THE YEAR ENDED 31 MARCH 2023**

Trustees Guy Buckland, Chair of Trust Board
Susan Lesley Dors, Trustee
Simon Russell, Trustee
Anna Clare Hall, Trustee
Paul David Harrod, Trustee
Tabinda Rashid- Fadel, Trustee
William Brown, Trustee

Company registered number 05794916

Charity registered number 1114495

Company secretary Steve Nelson

Independent auditors Bishop Fleming LLP
Chartered Accountants
Statutory Auditors
10 Temple Back
Bristol
BS1 6FL

Bankers Santander
Avon Street
Bristol
BS2 0EL

**WEST OF ENGLAND SPORT TRUST
(A COMPANY LIMITED BY GUARANTEE)**

**TRUSTEES' REPORT
FOR THE YEAR ENDED 31 MARCH 2023**

The Trustees present their Annual Report together with the audited financial statements of the company West of England Sport Trust (Wesport) for the year 1 April 2022 to 31 March 2023. The Trustees confirm that the Annual Report and financial statements of the company comply with the current statutory requirements, the requirements of the company's governing document and the provisions of the Statement of Recommended Practice (SORP), applicable to charities preparing their accounts in accordance with the Financial Reporting Standard applicable in the UK and Republic of Ireland (FRS 102) (effective 1 January 2015) as amended by Update Bulletin 1 (effective 1 January 2015).

Since the Charity qualifies as small under section 382 of the Companies Act 2006, the Strategic Report required of medium and large companies under the Companies Act 2006 (Strategic Report and Directors' Report) Regulations 2013 has been omitted.

OBJECTIVES AND ACTIVITIES

a. POLICIES AND OBJECTIVES

The objective of the charity is to collectively increase, promote, support and celebrate lifelong participation in sport and realising potential for all.

West of England Sport Trust is based at its registered address and uses this site for administrative purpose.

We have referred to the guidance contained in the Charity Commission's general guidance on public benefit when reviewing our aims and objectives and in planning our future activities. In particular, the Trustees consider how planned activities will contribute to the aims and objectives they have set.

Public Benefit Test

The West of England Sport Trust was set up with the following charitable objectives in the Memorandum of Association (the governing document):

The Charity's objects are to promote community participation in healthy recreation for the benefit of the inhabitants of the West of England and in particular to provide, or to assist in providing, and to promote:

- (a) public facilities, amenities, equipment and services for healthy recreation;
- (b) facilities and services for recreational, sporting or other leisure time occupation in the interests of social welfare for the public at large or those who by reason of their youth, age, infirmity or disablement, financial hardship or social and economic circumstances, have need of such facilities and services;
- (c) the improvement and preservation of good health and well-being through participation in healthy recreation;
- (d) education, training and coaching courses which promote physical health and fitness;
- (e) the advancement of such other charitable purposes beneficial to the community consistent with the objects set out in (a) to (d) above as the Trustees of the Charity shall in their absolute discretion determine.

These objectives provide Wesport with sufficient flexibility to undertake a wide range of activity in the West of England. Our public benefit can be summarised as follows:

Public Benefit Statement

Through the network of organisations across the West of England we will deliver a range of opportunities to our communities to undertake sport and physical activity to improve their physical and mental health and well-being and in turn improve their quality of life. Examples include the delivery of sporting opportunities through the school, Higher Education & Further Education networks, wider community voluntary organisations who are able to support in engaging excluded communities and under-represented groups as well as through contact with

OBJECTIVES AND ACTIVITIES (CONTINUED)

local authority sports development and community divisions. The Wesport team works to deliver and coordinate this activity and to attract additional resources to enhance and sustain this delivery.

b. STRATEGIES FOR ACHIEVING OBJECTIVES

Wesport has continued to deliver against its charitable purpose.

The Wesport strategy **Acting with Purpose for our People and Place (2020-25)** with the Vision: **Inspire Active Lives, creating the conditions wherever possible to help everyone move more** sets out the direction of travel for Wesport. Wesport has been working proactively in collaboration with existing and new partners over the third year implementing this strategy, to make sure that moving more through sport and physical activity is for everyone across the West of England.

Wesport Strategic Themes for 2020 – 2025:

- Influencing the local ecosystem
- Focusing on information and measurement
- Wesport Delivery

c. ACTIVITIES FOR ACHIEVING OBJECTIVES

To achieve this vision, the Wesport Mission has set out to:

Establish the conditions for long-term change, enabling more people to be physically active, inclusive for all.

Wesport has adopted new values that are used to guide our work and our decisions:

- We are a team of people with a passion for sport and physical activity, which is at the heart of all we do.
- Collaboration is key; we know when to take the lead and understand when someone else is better placed to do so.
- We are proud to work for Wesport and we place value in the work we do. We are always seeking new ways to make a difference.
- Teamwork is vitally important – we support one another to get the job done, with honesty and commitment.
- We are people-centred; aiming to improve local communities by working with them.

Underpinning and driving this mission are Strategic Enablers, which will ensure that the structures, capacity and direction will achieve the vision. These are:

A Marketing and Communications Plan

Sound financial planning and target setting to grow the business objectives.

A strong staff team and structure in place, with the skills and support needed for success

Robust governance, performance measurement, evaluation, and data capture systems

OBJECTIVES AND ACTIVITIES (CONTINUED)

d. MAIN ACTIVITIES UNDERTAKEN TO FURTHER THE CHARITY'S PURPOSES FOR PUBLIC BENEFIT

It was another busy year for Wesport, with delivery and associated activities less affected by the prior restrictions of the pandemic. However, there are still significant disparities and inequalities in access to sport and physical activity opportunities for specific groups and audiences. Wesport has worked to understand and improve opportunities through building trusted relationships with a wide range of organisations, empowered to deliver physical activity and sport as part of their efforts to support their audience from under-represented audiences. The Sport England Together Fund (formerly known as the Tackling Inequalities Fund) has been used with a specific focus to address this. This has also widened Wesport's reach across the network within the West of England, creating relationships with new organisations to reach the target groups and continue to create a positive impact in areas that need it most.

The capacity of the Wesport staff team has increased, through additional Wesport employees and numerous commissioned roles external to Wesport. This covers both the focus on place-based working in Lockleaze (Bristol) and Weston-super-Mare (North Somerset), as well as a specific health focus on the social prescribing of physical activity, financially supporting five roles across the West of England. Wesport's health work has prioritised Ageing Well, physical activity social prescribing and mental health.

Other Wesport activity has continued throughout the year, including very successful Parks Tennis (Bristol) and Tennis@The Park (Bath and Keynsham) programmes.

Wesport continues to ensure that it is embedded within the local ecosystem of sport and physical activity. Wesport empowers people and organisations that have a direct connect with target audiences to impact on participation in sport and physical activity. This has been a priority in the co-ordination and management of the Together Fund (previously Tackling Inequalities Fund) and in the distribution of resources provided to local community organisations for sport and physical activity provision.

Headlines summarising Wesport's activity include:

- **School Games** – Engagement continues throughout the year with the School Games Organiser (SGO) network. There is a continued focus to reframe the School Games offer to address inactivity and inequality. The Commonwealth Games funding that the SGO network accessed has this year been used to provide a range of opportunities. A small percentage of existing Level 3 events and competitions were delivered throughout the year. Between January – March 2023 these have included Sports Hall Athletics – 20 schools with 450+ young people competed in the primary event and 36 schools with 250+ young people competed in the secondary event, and secondary netball with 8 teams and 96 young people taking part in the competition.
- **Bristol Parks Tennis** – The Parks Tennis sites (Canford Park, St George Park, and Eastville Park) have continued to attract considerable usage. By the end of the year more than 4,000+ court bookings had been recorded. A team of coaches have continued to deliver a programme of coaching courses across all three sites to meet the needs of the participants. These have included adult and junior focused sessions along with beginner and improver opportunities. Community Tennis Sessions have continued with an increased range of community organisations accessing opportunities. Engagement with Central Lawn Tennis Club has resulted in Wesport being seen as the right organisation to co-ordinate and administer the Happy Lane Fund. The fund aims to support community tennis and reduce the barriers to enable everyone to play tennis.
- **Bath and North East Somerset Tennis @ the Park** – This year saw the first full year of delivery under the Tennis @ the Park banner. At the end of the year memberships had seen a steady increase exceeding anticipated figures along with 2,000+ pay and play sessions being booked. Engagement with the coaching company Blue Sky provided the opportunity to deliver a small coaching programme aimed at the adult audience. It provided a chance to determine the demand for these opportunities.

OBJECTIVES AND ACTIVITIES (CONTINUED)

- **Tackling Inequalities Fund / Together Fund** – Continued funding for phase 4 of the Together Fund (formerly Tackling Inequalities Fund) was secured by Wesport from Sport England. Throughout this year Wesport have continued to work in partnership with VOSCUR – VCSE anchor partner for Bristol to ensure that the outcomes of the fund are met. The aim of the fund has continued to focus on four priority audiences:
 - People from Lower Socio Economic groups
 - Black, Asian and Ethnically Diverse Communities,
 - People with Long Term Health Conditions, and
 - Disabled People.

The aim remains to narrow the inequalities gap in Sport and Physical Activity that is still evident following the COVID-19 pandemic. In phase 4 funding was distributed to 166 projects. 48% to Culturally Diverse Communities, 24% to Low Incomes, 30% to Long Term Health Conditions and 20% to Disabled People, noting that a number of organisations cover more than one target audience.

Alongside the delivery of the projects VOSCUR continued to deliver a resilience support package of workshops based on evidenced need that was available to all organisations involved in the programme. Total funding distributed to the 166 community organisations through this phase 4 of Together Fund was £381,556. This brings the total through all four phases (since April 2021) to £795,284 funding 178 organisations through to end March 2023.

An application was submitted in January 2023 to Sport England which was successful in securing extension funding to provide an additional six months of delivery (April – September 2023). A new process for the allocation of this fund supported the application and will be put into practice at implementation.

A Tackling Inequalities Fund impact report has been written highlighting the impact this project has provided over the initial three years of delivery.

- **Opening School Facilities** – Towards the end of 2022 Wesport were made aware of the launch of phase 3 of the programme and the opportunity to access further funding. Working closely with the Active Partnership Network, Wesport were successful in securing funding for the programme. Timescales were very tight with year 1 funding being allocated late in December 2022 with a spend deadline of March 2023. Despite this deadline 19 schools were successful in being allocated funding for their plans.
- **PE Conference** – Although a conference was planned for the Autumn a confusion with the date and a booking at the venue meant that the conference had to be cancelled.
- **Primary School Engagement** – Relevant team members have continued to engage with the network of Primary schools across the West of England. Changes have been made to Wesport's website to encourage increased interaction with the information being provided. There has been a specific focus on the Active Lives survey and a drive to encourage more schools to sign up and complete in order to ensure that there is additional data available for the Wesport area to inform decision making and partner engagement. This year a place-based approach has been adopted with six localities across the area being identified based on a number of factors to secure targeted work from the team focusing on children and young people.
- **Fund Distribution** – In addition to managing the distribution of national funding (Together Fund – Sport England; Opening School Facilities – Dept for Education), during this year Wesport have managed the grant processes of the following funds:

1) The Clinical Commissioning Group (CCG) for Bristol, North Somerset, and South Gloucestershire (BNSSG) The Green Social Prescribing Fund (GSP) which aims to support community organisations to develop projects with a focus on mental wellbeing. The final round of the fund was managed with a clear link to Together Fund

**WEST OF ENGLAND SPORT TRUST
(A COMPANY LIMITED BY GUARANTEE)**

**TRUSTEES' REPORT (CONTINUED)
FOR THE YEAR ENDED 31 MARCH 2023**

OBJECTIVES AND ACTIVITIES (CONTINUED)

applications and organisations. During this round 8 organisations were funded through the GSP allocation and 6 organisations through the GSP allocation and Together Fund jointly.

2) The Crime Prevention Fund on behalf of Avon and Somerset Police which aims to support projects within focus areas that use sport and physical activity to reduce violence, crime, and anti-social behaviour in targeted areas. Across the Wesport area 9 projects were funded with a total of 641 participants being supported.

3) Ageing Well Communities Activities Budget – One of the identified projects within the Live Longer Better application. Awards were made in conjunction with Together Fund applications that met the identified criteria

4) Contain Outbreak Management Fund (COMF) (South Gloucestershire) Positive Activities Grant – linked to the COMF delivery in South Gloucestershire, 16 organisations were funded who met the agreed criteria.

Wesport continues to utilise its communication channels to maintain engagement with the network which is very important to ensure connectivity. A regular bulletin continues to be produced and is now sent monthly to a growing circulation list. This includes specific Club and PE bulletins as well.

Wesport's Twitter account (@WesportAP) recorded 3,366 profile visits and 34,000 tweet impressions. The Facebook account has 1225 followers & reaches 64,412 with 1430 profile visits. The website has received 22,104 users with the Bristol Parks Tennis site recording the highest number of visits. These are closely followed by Tennis@ the Park and the Fallproof Campaign. This year Wesport have expanded its reach through an Instagram account that at the end of the year recorded 724 followers.

Wesport also supported several campaigns through the year, including as examples: This Girl Can, Join the Movement, We Are Undefeatable, UK Coaching Week, Mental Health Awareness Week, International Women's Day, UK Race Equality Week, National Apprenticeship Week, Live Longer Better, Black History Month, Parents in Sport Week, Safeguarding Adults Week, Kick Plastics Out of Sport, Rainbow Laces, and Every Mind Matters.

Wesport has been working with Press Red (a data and insight consultancy) to evolve its data and insight function, and is also starting to focus on the organisations' collection and use of data & insight for Monitoring, Evaluation and Learning (MEL). Over the year Press Red have engaged with the team to develop knowledge and understanding of this area and the use of the various sources of data. Mapping tools have been specifically created for the Together Fund and for the Children and Young People area of work to inform gaps in provision and areas that need a specific focus. Valuable support has been given to the members of the team delivering the Ageing Well (Live Longer Better) project to ensure that learning is captured at relevant points on the journey and to create an effective report for evaluation. Regular key messages connected to the release of Active Lives data (adults and children) are shared with the team. Initial discussions have taken place about using data and insight to tell Wesport's story.

In relation to engagement with the sector's Workforce, there has been an increase in the number and frequency of contacts with National Governing Bodies of Sport. Meetings have been a mechanism to ensure that shared outcomes are known and actions taken appropriately to support these. The demand for face-to-face courses is still very low and a very small programme of courses was planned, however only one of these took place which was a First Aid training course.

Engagement with the professional network took place through Wesport's first face to face event since the pandemic, in September 2022 – a Sport and Physical Activity Network (SPAN) event was organised and delivered. A range of organisations attended the event covering 80+ attendees. The event looked at the use of data and insight to guide our work, partnership working through the Together Fund, and Wesport's journey to become an anti-racist organisation. The event has been followed up with smaller networking opportunities throughout the year which have include a Social Prescribing webinar and Race Equality workshops.

Community Organisations – Wesport continues to maintain and develop its connections with voluntary sector community organisations across the West of England to focus on reducing inequalities and engagement of inactive individuals from lower socio-economic groups primarily in under-served areas. This has been driven through the Tackling Inequalities Fund, with a specific focus on working with Black, Asian and Ethnically Diverse

OBJECTIVES AND ACTIVITIES (CONTINUED)

Communities. Organisations receiving funding through the fund has reached a total of 108 projects. These include Active Being Ltd, Access Sport, Barton Hill Activity Club, Bridges for Communities, Bristol Horn Youth Concern, Bristol MIND, Bristol Refugee Rights, Bristol Steppin Sisters, Eastside Community Trust, Friends of Grove Park, Friends of Page Park, Genesis Trust, Headway, Imayla, Khaas, Life Cycle UK, Open Minds Active, Soul Trail Wellbeing, Unseen UK, We Are Aware, and Youth Moves.

Wesport continues to engage with each of the four Unitary Authorities of the West of England. This engagement has included:

In Bristol

Discussions have been on going to re-energise the 'One City Sports Strategy'. The Unitary Authority has been given the opportunity to access additional Core Cities funding from Sport England to work with the local system. Wesport is working closely with the council on achieving the outcomes of the bid.

The delivery of the Contain Outbreak Management Funding (COMF) project has been a focus of work across three areas of the city working closely with the Healthy Living Centres and the social prescribing network. Physical Activity Link Workers have been recruited to develop links between identified need and local physical activity opportunities in the community.

Wesport continues to work closely with Lockleaze Neighbourhood Trust to develop local opportunities for participation and collaboration. Funding continues to be allocated to support an existing member of staff in this organisation to work one day a week in the community. This is continuing to be very successful. Initial conversations and plans have taken place to use data & insight to identify gaps in provision and focus areas for targeted opportunities.

Engagement continues with the relevant departments within Bristol City Council to deliver the Parks Tennis programme across the three parks sites.

In South Gloucestershire

Engagement with the Public Health team has resulted in Wesport being one of the partners leading the Contain Outbreak Management Fund (COMF) project delivery across the unitary authority area. Working closely with Southern Brooks, Wesport have supported the recruitment of two physical activity link workers and the dissemination of Positive Activities grants to 16 organisations.

New discussions have commenced around a Community Use Agreement at The Grange (Netball Centre) and the role Wesport can and may play in ensuring the agreement is met.

In North Somerset

The focus continues to be on Weston and the strategic group Active Weston. Working closely with the Active Lifestyles Team and with Voluntary Action North Somerset (VANS), funding continues to be secured to maintain the employment of an activator to work closely with the community to develop opportunities. In the last quarter of the year Public Health funding and Together Fund funding were aligned with the Together Fund panel awarding funding to physical activity projects delivered by organisations in North Somerset.

In Bath and North East Somerset

There has been involvement in the recruitment of a new Head of Leisure and Physical Activity and initial conversations have taken place about shared outcomes and objectives. The engagement with the UA continues through the Tennis@ the Park tender delivery. Support has been given to an Active Travel funding application which has now resulted in representation on a steering group in the Somer Valley area delivering a 'Beat the Streets' project. Plans were in place to join together funding opportunities locally primarily around the Together Fund, this did not reach a conclusion this year however it will be re-discussed in the next year of engagement.

OBJECTIVES AND ACTIVITIES (CONTINUED)

Connecting with Health Networks

Wesport's connection to the health network / landscape across the West of England has strengthened with a growing relationship building with the Clinical Commissioning Group (CCG) covering Bristol, North Somerset, and South Gloucestershire. Delivery commenced at the start of this year of the 'Live Longer Better' (Ageing Well) project and the seven test and learn components. A Senior Project Manager was appointed at the start of the year to implement the planned activity. All of the projects were delivered to varying degrees. An impact report was produced at the end of 9 months of delivery which has resulted in extension funding for 5 of the 7 projects to start in April 2023.

The delivery of the COMF funded project in Bristol also commenced at the start of the year with the appointment of a Project Manager. Engagement across the Social Prescribing network has increased with strong partnerships being formed to ensure successful delivery of the outcomes. Each focus area (North, Inner City and East and South Bristol) have appointed Physical Activity Link Workers. Ongoing interaction with the Green Social Prescribing Board (CCG subgroup) continues with support to the administration of the final round of the fund. There have been close links with the distribution of the Together Fund awards that have ensured there is no duplication of funding.

Governance Update

Required as an organisation in receipt of significant Sport England funding, Wesport underwent a Governance Review which was undertaken by BDO, commissioned by Sport England. The process commenced in December 2022 with a series of detailed interviews taking place with Trustees and Senior Managers alongside an extensive review of documentation. The review resulted in an overall 'Good' rating showing that Wesport has detailed arrangements in place to support good governance.

Wesport underwent an external Trust Board evaluation in November 2021, carried out by specialist consultancy firm Campbell Tickell. Their final report in June 2022 summarised Wesport's governance as:

Wesport have well-developed and effective governance. Wesport has a high performing Board that is quickly developing as an effective team, despite several Trustees joining reasonably recently and during the pandemic. We found Wesport and its Board to be particularly strong in the following key areas, where we judged their performance to be mature:

- Skills, competence, diversity
- Strategic role
- Dynamics and culture
- Conduct of meetings

Sustaining and improving governance requires a regular and focused approach. Wesport will continue to work to ensure regular reviews of governance policies and processes align with the excellent report received following this evaluation and the BDO assessment.

Sport England Code of Sports Governance (Tier 3) – this Code was reviewed and updated in 2021, with several elements amended and 7 new requirements for Tier 3 (the highest level, which Wesport must meet). Sport England also commissioned an external body, AGS Consortium, to provide support to all System Partners to establish robust Diversity and Inclusion Action Plans.

The initial submission against the updated Tier 3 requirements took place in Q4 of 2022-23, with a final submission in April 2023. An action plan will be created in partnership with Sport England that will cover Tier 3 requirements, the recommendations from the BDO Governance Assurance Review, and the Campbell Tickell external evaluation. The work with AGS Consortium on the creation of the updated Diversity and Inclusion Action Plan will also take place in 2023-24.

As such, internal governance for Wesport will continue to be a key focus for 2023-24.

OBJECTIVES AND ACTIVITIES (CONTINUED)

Race Equality - Wesport has continued its journey to become an anti-racist organisation. A number of areas of the organisation, has seen the impact of the actions developed, identifying key milestones with the team and Trustees. This includes:

- Building strategic relationships, including with SARI (Stand Against Racism and Inequality, a local charity that supports victims of hate), establishing a two year agreement to work together
- Staff and Trustee Race Equality training delivered by SARI
- Offer and delivery of Race Equality training for professional network colleagues – three workshops delivered between November 2022 and February 2023. This was also delivered by SARI as part of the agreement with Wesport
- Workforce Innovation Fund utilised to engage with Refugee and Asylum Seekers
- Focus on engaging culturally diverse communities through initiatives including Together Fund, where a proportion of the fund went to organisations working directly within these communities.
- Working with Press Red to improve the quality and understanding of local demographic data, including understanding how diverse the culturally diverse communities are across the West of England;
- Intentionally working with culturally diverse organisations such as Bristol Somali Voice, Pakistani Welfare Organisation, Bangladeshi Womens' Group, Chinese Community and Polish speakers (Live Longer Better project).

Safeguarding – As part of Wesport's funding agreement with Sport England an annual review is required to take place with the Child Protection In Sport Unit (CPSU) to ensure that appropriate safeguarding standards are being met. Following the review meeting that took place in November 2022 Wesport received confirmation that the organisation is meeting the standards as expected. Some of the examples provided were also shared with the wider Active Partnership network as examples of best practice.

e. SUMMARY

2022/23 has seen the aftermath of the COVID-19 pandemic still impacting on the lives of the people of the West of England. The inequalities that existed before the pandemic, widened during the outbreak, are still the priority focus. This period has proven invaluable in developing Wesport's understanding of the place it is working to support, how resilient it is, along with its challenges and opportunities.

The role of Wesport to advocate for the importance of physical activity continues to be important. There are many parts of the local ecosystem where moving more, physical activity, and sport can play a positive role in achieving much wider outcomes. The Wesport Board of Trustees and team remain focused on the vision and mission of the organisation, and their contribution to achieving them.

2022/23 saw Wesport build on new opportunities that emerged in 2021/22. Networks and relationship building have continued to grow. Wesport's role in the West of England voluntary sector landscape has improved, in particular working with VOSCUR delivering the Tackling Inequalities Fund / Together Fund, and the subsequent relationship with the further three VCSE anchor organisations in the other three unitary authorities.

Wesport's Trustees continue to recognise the excellent progress that the team has made in working effectively across the West of England, particularly noting the challenges of working across such a complex area. A key element to this is how effectively the team works openly & collaboratively, both within Wesport and across the wider network. The Trustees are grateful for the hard work of the team & the continued focus on the strategic aims of the organisation.

**WEST OF ENGLAND SPORT TRUST
(A COMPANY LIMITED BY GUARANTEE)**

**TRUSTEES' REPORT (CONTINUED)
FOR THE YEAR ENDED 31 MARCH 2023**

ACHIEVEMENTS AND PERFORMANCE

FINANCIAL REVIEW

a. RESULT FOR THE YEAR

The accounts on pages 19 to 35 set out the details of the statement of financial activities for the year ended 31 March 2023 and the balance sheet as at that date.

During 2023 total income decreased from £2,266,190 to £1,795,872 and total expenditure increased from £1,469,565 to £2,114,976. The resulting deficit in the year is £319,104.

b. GOING CONCERN

After making appropriate enquiries, the trustees have a reasonable expectation that the company has adequate resources to continue in operational existence for the foreseeable future. For this reason they continue to adopt the going concern basis in preparing the financial statements. Further details regarding the adoption of the going concern basis can be found in the Accounting Policies.

c. RESERVES POLICY

The reserves of the charity should be of a sufficient level to ensure that its recurring commitments and planned revenue expenditure can be met out of income. The trustees will aim to maintain a minimum of £200k in reserves to cover working capital requirements and to allow for wind up costs should that occur.

At 31 March 2023 the Charity held total reserves of £936,577 represented by restricted reserves of £525,948 and unrestricted reserves of £410,629.

STRUCTURE, GOVERNANCE AND MANAGEMENT

a. CONSTITUTION

The company is registered as a charitable company limited by guarantee and was set up by a Trust deed. The company is constituted under a Trust deed and is a registered charity number 1114495.

The principal object of the company is to promote community participation in healthy recreation for the benefit of the inhabitants of the West of England and to provide, or to assist in providing, and to promote: -

- (1) public facilities, amenities, equipment, and services for healthy recreation.
- (2) facilities and services for recreational, sporting, or other leisure time occupation in the interests of social welfare for the public at large or those who by reason of their youth, age, infirmity or disablement, financial hardship or social and economic circumstances, have need of such facilities and services.
- (3) the improvement and preservation of good health and well-being through participation in healthy recreation.
- (4) education, training and coaching courses which promote physical health and fitness.
- (5) the advancement of such other charitable purposes beneficial to the community consistent with the objects set out in 3 (a) to (d) above as the Trustees of the Charity shall in their absolute discretion determine.

STRUCTURE, GOVERNANCE AND MANAGEMENT (CONTINUED)

b. METHOD OF APPOINTMENT OR ELECTION OF TRUSTEES

The management of the company is the responsibility of the Trustees who are elected and co-opted under the terms of the Trust deed.

c. POLICIES ADOPTED FOR THE INDUCTION AND TRAINING OF TRUSTEES

Once Trustees are appointed, each goes through a comprehensive induction process, including receiving a copy of the Wesport Memorandum of Understanding and Articles of Association, recent board papers, minutes and dates of next meetings, a copy of the latest Wesport Strategy and most recent audited accounts.

Trustees receive an induction pack with the documents highlighted above, and including further policy documents – Delegations Policy, Financial Procedures and Policy, Risk Management Plan and Risk Register Policy, Safeguarding Children and Young People Policy, Wesport Trustee Handbook. In addition, Trustee training opportunities are provided through national and local organisations, through direct engagement with the staff team and at events to understand the business of Wesport and the environment the organisation operates within. In February 2022 the Board received Safeguarding Training (Children and Adults at Risk) which was delivered by the Child Protection in Sport Unit and The Ann Craft Trust.

Trustees are provided with information about Wesport – Current Trustees / Patrons, Staff Structure and Governance, Chief Executive Officer's job description, Operations Plan for the current financial year and contact details for the CEO and senior team.

Finally, Trustees are provided with information about their role – Trustee Role Description and Person Specification, Good Trustee Practice Information (Charity Commission), Trustee Declaration of Interests, Governance Documents to Sign and Return, Trustee Skills Matrix.

d. PAY POLICY FOR SENIOR STAFF

Wesport has a pay and remunerations policy approved by the board and adhered to on an annual basis. Senior staff pay is a part of this, with specific roles identified at an agreed band of remuneration.

e. RISK MANAGEMENT

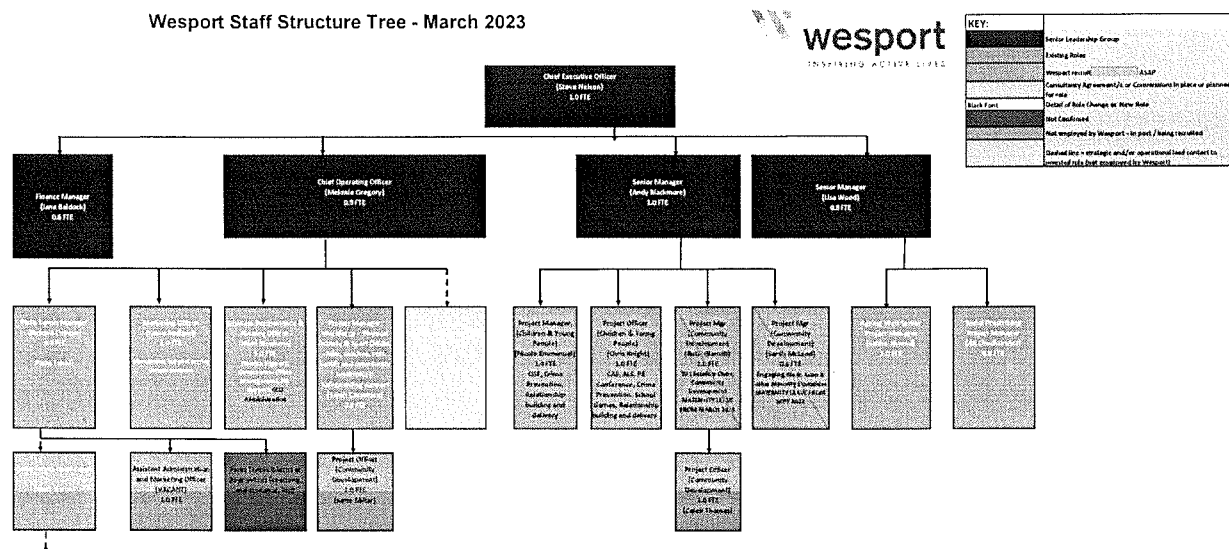
The Trustees have assessed Wesport's exposure to major risks, in particular those related to the operations and finances of the company and are satisfied that systems and procedures are in place to mitigate our exposure to the major risks.

**WEST OF ENGLAND SPORT TRUST
(A COMPANY LIMITED BY GUARANTEE)**

**TRUSTEES' REPORT (CONTINUED)
FOR THE YEAR ENDED 31 MARCH 2023**

STRUCTURE, GOVERNANCE AND MANAGEMENT (CONTINUED)

f. ORGANISATIONAL STRUCTURE AND DECISION MAKING



FUTURE DEVELOPMENTS

There will continue to be a strong focus on tackling inequalities in our communities that have widened further following the pandemic. The Together Fund in particular aims to support organisations with recovery from the impact on the target audiences. Wesport’s engagement within the Health System will continue to develop with the delivery of the ‘Live Longer Better’ Ageing Well project across Bristol, North Somerset and South Gloucestershire (BNSSG CCG) and the Contain Outbreak Management Fund (COMF) in Bristol. These projects will be used to demonstrate impact to secure further funding.

The team will continue to focus on their journey to becoming an anti-racist organisation through the implementation of the action plan and by the engagement and collaboration locally and nationally alongside the network of Active Partnerships across England. A decision on the next steps to continue to embed data and insight and monitoring and evaluation and learning within the team will be agreed. Following the completion of the Campbell Tickell External Board Evaluation and the BDO Governance Assurance Review, the Trust Board and Senior Management Team will work to implement the recommendations of the final reports & associated actions.

FUNDS HELD AS CUSTODIAN

Wesport holds a few small funding pots on behalf of small voluntary sector organisations to enable the achievement of local objectives for that sport or organisation. The outcomes worked towards often will straddle financial years, so funding to aid the achievement of these local objectives is held.

**WEST OF ENGLAND SPORT TRUST
(A COMPANY LIMITED BY GUARANTEE)**

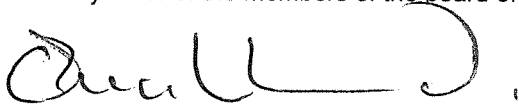
**TRUSTEES' REPORT (CONTINUED)
FOR THE YEAR ENDED 31 MARCH 2023**

DISCLOSURE OF INFORMATION TO AUDITORS

Each of the persons who are Trustees at the time when this Trustees' Report is approved has confirmed that:

- so far as that Trustee is aware, there is no relevant audit information of which the charity's auditors are unaware, and
- that Trustee has taken all the steps that ought to have been taken as a Trustee in order to be aware of any relevant audit information and to establish that the charity's auditors are aware of that information.

Approved by order of the members of the board of Trustees and signed on their behalf by:



Guy Buckland
Chair of Trust Board
Date: 18/07/2023

**WEST OF ENGLAND SPORT TRUST
(A COMPANY LIMITED BY GUARANTEE)**

**STATEMENT OF TRUSTEES' RESPONSIBILITIES
FOR THE YEAR ENDED 31 MARCH 2023**

The Trustees (who are also the directors of the Charity for the purposes of company law) are responsible for preparing the Trustees' Report and the financial statements in accordance with applicable law and United Kingdom Accounting Standards (United Kingdom Generally Accepted Accounting Practice).

Company law requires the Trustees to prepare financial statements for each financial year. Under company law, the Trustees must not approve the financial statements unless they are satisfied that they give a true and fair view of the state of affairs of the Charity and of its incoming resources and application of resources, including its income and expenditure, for that period. In preparing these financial statements, the Trustees are required to:

- select suitable accounting policies and then apply them consistently;
- observe the methods and principles of the Charities SORP (FRS 102);
- make judgments and accounting estimates that are reasonable and prudent;
- state whether applicable UK Accounting Standards (FRS 102) have been followed, subject to any material departures disclosed and explained in the financial statements;
- prepare the financial statements on the going concern basis unless it is inappropriate to presume that the Charity will continue in business.

The Trustees are responsible for keeping adequate accounting records that are sufficient to show and explain the Charity's transactions and disclose with reasonable accuracy at any time the financial position of the Charity and enable them to ensure that the financial statements comply with the Companies Act 2006. They are also responsible for safeguarding the assets of the Charity and hence for taking reasonable steps for the prevention and detection of fraud and other irregularities.

Approved by order of the members of the board of Trustees and signed on its behalf by:



Guy Buckland
Chair of Trust Board

Date: 18/07/2023

**WEST OF ENGLAND SPORT TRUST
(A COMPANY LIMITED BY GUARANTEE)**

INDEPENDENT AUDITORS' REPORT TO THE MEMBERS OF WEST OF ENGLAND SPORT TRUST

OPINION

We have audited the financial statements of West of England Sport Trust (the 'charitable company') for the year ended 31 March 2023 which comprise the Statement of Financial Activities, the Balance Sheet, the Statement of Cash Flows and the related notes, including a summary of significant accounting policies. The financial reporting framework that has been applied in their preparation is applicable law and United Kingdom Accounting Standards, including Financial Reporting Standard 102 'The Financial Reporting Standard applicable in the UK and Republic of Ireland' (United Kingdom Generally Accepted Accounting Practice).

In our opinion the financial statements:

- give a true and fair view of the state of the charitable company's affairs as at 31 March 2023 and of its incoming resources and application of resources, including its income and expenditure for the year then ended;
- have been properly prepared in accordance with United Kingdom Generally Accepted Accounting Practice; and
- have been prepared in accordance with the requirements of the Charities Act 2011.

BASIS FOR OPINION

We conducted our audit in accordance with International Standards on Auditing (UK) (ISAs (UK)) and applicable law. Our responsibilities under those standards are further described in the Auditors' responsibilities for the audit of the financial statements section of our report. We are independent of the charitable company in accordance with the ethical requirements that are relevant to our audit of the financial statements in the United Kingdom, including the Financial Reporting Council's Ethical Standard, and we have fulfilled our other ethical responsibilities in accordance with these requirements. We believe that the audit evidence we have obtained is sufficient and appropriate to provide a basis for our opinion.

CONCLUSIONS RELATING TO GOING CONCERN

In auditing the financial statements, we have concluded that the Trustees' use of the going concern basis of accounting in the preparation of the financial statements is appropriate.

Based on the work we have performed, we have not identified any material uncertainties relating to events or conditions that, individually or collectively, may cast significant doubt on the charitable company's ability to continue as a going concern for a period of at least twelve months from when the financial statements are authorised for issue.

Our responsibilities and the responsibilities of the Trustees with respect to going concern are described in the relevant sections of this report.

OTHER INFORMATION

The other information comprises the information included in the Annual Report other than the financial statements and our Auditors' Report thereon. The Trustees are responsible for the other information contained within the Annual Report. Our opinion on the financial statements does not cover the other information and, except to the extent otherwise explicitly stated in our report, we do not express any form of assurance conclusion thereon. Our responsibility is to read the other information and, in doing so, consider whether the other information is materially inconsistent with the financial statements or our knowledge obtained in the course of the audit, or otherwise appears to be materially misstated. If we identify such material inconsistencies or apparent material misstatements, we are required to determine whether this gives rise to a material misstatement in the financial statements themselves. If, based on the work we have performed, we conclude that there is a material misstatement of this other information, we are required to report that fact.

We have nothing to report in this regard.

**WEST OF ENGLAND SPORT TRUST
(A COMPANY LIMITED BY GUARANTEE)**

**INDEPENDENT AUDITORS' REPORT TO THE MEMBERS OF WEST OF ENGLAND SPORT TRUST
(CONTINUED)**

MATTERS ON WHICH WE ARE REQUIRED TO REPORT BY EXCEPTION

We have nothing to report in respect of the following matters where the Charities (Accounts and Reports) Regulations 2008 requires us to report to you if, in our opinion:

- the information given in the Trustees' Report is inconsistent in any material respect with the financial statements; or
- sufficient accounting records have not been kept; or
- the financial statements are not in agreement with the accounting records and returns; or
- we have not received all the information and explanations we require for our audit.

RESPONSIBILITIES OF TRUSTEES

As explained more fully in the Trustees' Responsibilities Statement, the Trustees (who are also the directors of the charitable company for the purposes of company law) are responsible for the preparation of the financial statements and for being satisfied that they give a true and fair view, and for such internal control as the Trustees determine is necessary to enable the preparation of financial statements that are free from material misstatement, whether due to fraud or error.

In preparing the financial statements, the Trustees are responsible for assessing the charitable company's ability to continue as a going concern, disclosing, as applicable, matters related to going concern and using the going concern basis of accounting unless the Trustees either intend to liquidate the charitable company or to cease operations, or have no realistic alternative but to do so.

**INDEPENDENT AUDITORS' REPORT TO THE MEMBERS OF WEST OF ENGLAND SPORT TRUST
(CONTINUED)**

AUDITORS' RESPONSIBILITIES FOR THE AUDIT OF THE FINANCIAL STATEMENTS

Our objectives are to obtain reasonable assurance about whether the financial statements as a whole are free from material misstatement, whether due to fraud or error, and to issue an Auditors' Report that includes our opinion. Reasonable assurance is a high level of assurance, but is not a guarantee that an audit conducted in accordance with ISAs (UK) will always detect a material misstatement when it exists. Misstatements can arise from fraud or error and are considered material if, individually or in the aggregate, they could reasonably be expected to influence the economic decisions of users taken on the basis of these financial statements.

Irregularities, including fraud, are instances of non-compliance with laws and regulations. We design procedures in line with our responsibilities, outlined above, to detect material misstatements in respect of irregularities, including fraud. The extent to which our procedures are capable of detecting irregularities, including fraud is detailed below:

- We have considered the nature of the sector, control environment and financial performance;
- We have considered the results of enquiries with management and trustees in relation to their own identification and assessment of the risk of irregularities within the entity; and
- We have reviewed the documentation of key processes and controls and performed walkthroughs of transactions to confirm that the systems are operating in line with documentation.

As a result of these procedures, we have considered the opportunities and incentives that may exist within the organisation for fraud and identified the highest area of risk to be in relation to revenue recognition, with a particular risk in relation to year-end cut off. In common with all audits under ISAs (UK) we are also required to perform specific procedures to respond to the risk of management override.

We have also obtained understanding of the legal and regulatory frameworks that the Charity operates in, focusing on provisions of those laws and regulations that had a direct effect on the determination of material amounts and disclosures in the financial statements. The key laws and regulations we considered in this context included the Charities Act 2011, Charity SORP 2019, FRS 102 and the terms and conditions attaching to material grants received by the Charity. In addition, we considered the provisions of other laws and regulations that do not have a direct effect on the financial statements but compliance with which may be fundamental to the Charity's ability to operate or avoid a material penalty. These included data protection regulations, health and safety regulations and employment legislation.

Our procedures to respond to risks identified included the following:

- Reviewing the financial statement disclosures and testing to supporting documentation to assess compliance with provisions of relevant laws and regulations described as having a direct effect on the financial statements;
- Performing analytical procedures to identify unusual or unexpected relationships that may indicate risks of material misstatement due to fraud;
- Reviewing board meeting minutes;
- Enquiring of management in relation to actual and potential claims or litigations; and
- Performing detailed transactional testing in relation to the recognition of revenue, specifically grants, with a particular focus around year-end cut off.

In addressing the risk of fraud through management override of controls, testing the appropriateness of journal entries and other adjustments; assessing whether the judgments made in accounting estimates are indicative of potential bias; and evaluating the business rationale of significant transactions that are unusual or outside the normal course of business.

We also communicated identified laws and regulation and potential fraud risk to all trustees of the engagement team and remained alert to possible indicators of fraud or non-compliance with laws and regulations throughout the audit.

**WEST OF ENGLAND SPORT TRUST
(A COMPANY LIMITED BY GUARANTEE)**

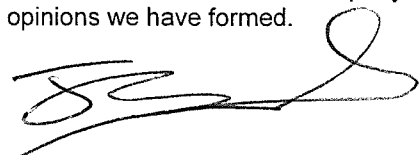
**INDEPENDENT AUDITORS' REPORT TO THE MEMBERS OF WEST OF ENGLAND SPORT TRUST
(CONTINUED)**

As a result of the inherent limitations of an audit, there is a risk that not all irregularities, including a material misstatement in financial statements or non-compliance with regulation, will be detected by us. The risk increases the further removed compliance with a law and regulation is from the events and transactions reflected in the financial statements, given we will be less likely to be aware of it, or should the irregularity occur as a result of fraud rather than a one-off error, as this may involve intentional concealment, forgery, collusion, omission or misrepresentation.

A further description of our responsibilities for the audit of the financial statements is located on the Financial Reporting Council's website at: www.frc.org.uk/auditorsresponsibilities. This description forms part of our Auditors' Report.

USE OF OUR REPORT

This report is made solely to the charitable company's trustees, as a body, in accordance with Part 4 of the Charities (Accounts and Reports) Regulations 2008. Our audit work has been undertaken so that we might state to the charitable company's trustees those matters we are required to state to them in an Auditors' Report and for no other purpose. To the fullest extent permitted by law, we do not accept or assume responsibility to anyone other than the charitable company and its members, as a body, for our audit work, for this report, or for the opinions we have formed.



Joseph Scaife FCA DChA (Senior Statutory Auditor)

for and behalf of

Bishop Fleming LLP

Chartered Accountants

Statutory Auditors

10 Temple Back

Bristol

BS1 6FL

Date: 27/7/23

WEST OF ENGLAND SPORT TRUST
(A COMPANY LIMITED BY GUARANTEE)

STATEMENT OF FINANCIAL ACTIVITIES (INCORPORATING INCOME AND EXPENDITURE ACCOUNT)
FOR THE YEAR ENDED 31 MARCH 2023

	Note	Unrestricted funds 2023 £	Restricted funds 2023 £	Total funds 2023 £	Total funds 2022 £
Income from:					
Donations and legacies	2	487,136	1,143,062	1,630,198	2,043,811
Charitable activities	3	145,900	1,920	147,820	129,378
Investments	4	17,854	-	17,854	1,234
Other income	5	-	-	-	91,767
Total income		650,890	1,144,982	1,795,872	2,266,190
Expenditure on:					
Charitable activities	6	577,961	1,537,015	2,114,976	1,469,565
Total expenditure		577,961	1,537,015	2,114,976	1,469,565
Net movement in funds		72,929	(392,033)	(319,104)	796,625
Reconciliation of funds:					
Total funds brought forward		337,700	917,981	1,255,681	459,056
Net movement in funds		72,929	(392,033)	(319,104)	796,625
Total funds carried forward		410,629	525,948	936,577	1,255,681

The Statement of Financial Activities includes all gains and losses recognised in the year.

The notes on pages 22 to 35 form part of these financial statements.

WEST OF ENGLAND SPORT TRUST
(A COMPANY LIMITED BY GUARANTEE)
REGISTERED NUMBER:05794916

BALANCE SHEET
AS AT 31 MARCH 2023

	Note	2023 £	2022 £
Current assets			
Debtors	11	198,161	7,107
Cash at bank and in hand		1,011,643	1,380,282
		<u>1,209,804</u>	<u>1,387,389</u>
Creditors: amounts falling due within one year	12	(273,227)	(131,708)
Net current assets		<u>936,577</u>	<u>1,255,681</u>
Total assets less current liabilities		<u>936,577</u>	<u>1,255,681</u>
Total net assets		<u><u>936,577</u></u>	<u><u>1,255,681</u></u>
Charity funds			
Restricted funds	13	525,948	917,981
Unrestricted funds	13	410,629	337,700
Total funds		<u><u>936,577</u></u>	<u><u>1,255,681</u></u>

The entity was entitled to exemption from audit under section 477 of the Companies Act 2006.

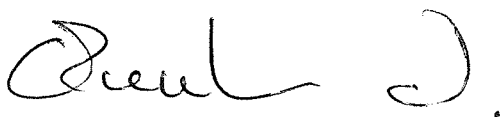
The members have not required the entity to obtain an audit for the year in question in accordance with section 476 of the Companies Act 2006.

However, an audit is required in accordance with section 144 of the Charities Act 2011.

The Trustees acknowledge their responsibilities for complying with the requirements of the Act with respect to accounting records and preparation of financial statements.

The financial statements have been prepared in accordance with the provisions applicable to entities subject to the small companies regime.

The financial statements were approved and authorised for issue by the Trustees and signed on their behalf by:



Guy Buckland
Chair of Trust Board

Date: 18/07/2023

The notes on pages 22 to 35 form part of these financial statements.

**WEST OF ENGLAND SPORT TRUST
(A COMPANY LIMITED BY GUARANTEE)**

**STATEMENT OF CASH FLOWS
FOR THE YEAR ENDED 31 MARCH 2023**

	2023 £	2022 £
Cash flows from operating activities		
Net cash used in operating activities	(386,493)	853,968
	<hr/>	<hr/>
Cash flows from investing activities		
Investment income received	17,854	1,234
	<hr/>	<hr/>
Net cash provided by investing activities	17,854	1,234
	<hr/>	<hr/>
Change in cash and cash equivalents in the year	(368,639)	855,202
Cash and cash equivalents at the beginning of the year	1,380,282	525,080
	<hr/>	<hr/>
Cash and cash equivalents at the end of the year	<u>1,011,643</u>	<u>1,380,282</u>

The notes on pages 22 to 35 form part of these financial statements

**WEST OF ENGLAND SPORT TRUST
(A COMPANY LIMITED BY GUARANTEE)**

**NOTES TO THE FINANCIAL STATEMENTS
FOR THE YEAR ENDED 31 MARCH 2023**

1. ACCOUNTING POLICIES

1.1 BASIS OF PREPARATION OF FINANCIAL STATEMENTS

The financial statements have been prepared in accordance with the Charities SORP (FRS 102) - Accounting and Reporting by Charities: Statement of Recommended Practice applicable to charities preparing their accounts in accordance with the Financial Reporting Standard applicable in the UK and Republic of Ireland (FRS 102) (effective 1 January 2019), the Financial Reporting Standard applicable in the UK and Republic of Ireland (FRS 102) and the Companies Act 2006.

West of England Sport Trust meets the definition of a public benefit entity under FRS 102. Assets and liabilities are initially recognised at historical cost or transaction value unless otherwise stated in the relevant accounting policy.

1.2 COMPANY STATUS

The company is a company limited by guarantee. The members of the company are the Trustees named on page 1. In the event of the company being wound up, the liability in respect of the guarantee is limited to £1 per member of the company.

1.3 FUND ACCOUNTING

General funds are unrestricted funds which are available for use at the discretion of the Trustees in furtherance of the general objectives of the company and which have not been designated for other purposes.

Restricted funds are funds which are to be used in accordance with specific restrictions imposed by donors or which have been raised by the company for particular purposes. The costs of raising and administering such funds are charged against the specific fund. The aim and use of each restricted fund is set out in the notes to the financial statements

1.4 GOING CONCERN

The Trustees assess whether the use of going concern is appropriate, i.e. whether there are any material uncertainties related to events or conditions that may cast significant doubt on the ability of the charity to continue as a going concern. The Trustees make this assessment in respect of a period of one year from the date of approval of the financial statements.

The Trustees continue to monitor the impact that Covid-19 is having on operations and are taking actions to minimise their effect on the long-term reserves of the charity. Under all the scenarios reviewed, the charity has sufficient reserves to enable it to continue as a going concern for the foreseeable future. For this reason it continues to adopt the going concern basis in preparing the financial statements.

1.5 INCOME

All income is recognised once the Charity has entitlement to the income, it is probable that the income will be received and the amount of income receivable can be measured reliably.

Other income is recognised in the period in which it is receivable and to the extent the goods have been provided or on completion of the service.

1. ACCOUNTING POLICIES (continued)

1.6 EXPENDITURE

Expenditure is recognised once there is a legal or constructive obligation to transfer economic benefit to a third party, it is probable that a transfer of economic benefits will be required in settlement and the amount of the obligation can be measured reliably. Expenditure is classified by activity. The costs of each activity are made up of the total of direct costs and shared costs, including support costs involved in undertaking each activity. Direct costs attributable to a single activity are allocated directly to that activity. Shared costs which contribute to more than one activity and support costs which are not attributable to a single activity are apportioned between those activities on a basis consistent with the use of resources.

Charitable activities costs are costs incurred on the company's educational operations, including support costs and costs relating to the governance of the company apportioned to charitable activities.

1.7 TANGIBLE FIXED ASSETS AND DEPRECIATION

All assets costing more than £1,000 are capitalised.

Tangible fixed assets are initially recognised at cost. After recognition, under the cost model, tangible fixed assets are measured at cost less accumulated depreciation and any accumulated impairment losses.

Depreciation is charged so as to allocate the cost of tangible fixed assets less their residual value over their estimated useful lives, using the straight-line method.

Depreciation is provided on the following basis:

Fixtures and fittings	- 33% straight line
-----------------------	---------------------

The charity holds fixed assets that cost £9,455 (2022: £9,455) and are carried in the accounts at nil net book value

1.8 OPERATING LEASES

Rentals paid under operating leases are charged to the Statement of Financial Activities on a straight line basis over the lease term.

Benefits received and receivable as an incentive to sign an operating lease are recognised on a straight line basis over the period until the date the rent is expected to be adjusted to the prevailing market rate.

1.9 DEBTORS

Trade and other debtors are recognised at the settlement amount after any trade discount offered. Prepayments are valued at the amount prepaid net of any trade discounts due.

1.10 CASH AT BANK AND IN HAND

Cash at bank and in hand includes cash and short-term highly liquid investments with a short maturity of three months or less from the date of acquisition or opening of the deposit or similar account.

**WEST OF ENGLAND SPORT TRUST
(A COMPANY LIMITED BY GUARANTEE)**

**NOTES TO THE FINANCIAL STATEMENTS
FOR THE YEAR ENDED 31 MARCH 2023**

1. ACCOUNTING POLICIES (continued)

1.11 LIABILITIES AND PROVISIONS

Liabilities are recognised when there is an obligation at the Balance sheet date as a result of a past event, it is probable that a transfer of economic benefit will be required in settlement, and the amount of the settlement can be estimated reliably. Liabilities are recognised at the amount that the company anticipates it will pay to settle the debt or the amount it has received as advanced payments for the goods or services it must provide. Provisions are measured at the best estimate of the amounts required to settle the obligation. Where the effect of the time value of money is material, the provision is based on the present value of those amounts, discounted at the pre-tax discount rate that reflects the risks specific to the liability. The unwinding of the discount is recognised within interest payable and similar charges.

1.12 PENSIONS

The Charity operates a defined contribution pension scheme and the pension charge represents the amounts payable by the Charity to the fund in respect of the year.

In April 2021, the company also operated a defined benefits pension scheme for the local government staff which is operated by Bath and North East Somerset Council. The benefits of the scheme are governed by the Local Government Pension Scheme Regulations 1997, as amended, and the employer's contributions are set by the Fund Actuary every three years. Wesport left the Avon Pension Fund at the end of April 2021 and all staff were moved into the defined pension scheme referenced above.

1.13 FINANCIAL INSTRUMENTS

Financial instruments are classified and accounted for, according to the substance of the contractual arrangement, as either financial assets, financial liabilities or equity instruments. An equity instrument is any contract that evidences a residual interest in the assets of the company after deducting all of its liabilities. Financial instruments includes cash at bank, trade debtors, accrued income from financial instruments (comprising dividends and interest due from investments), trade creditors and accrued expenditure.

WEST OF ENGLAND SPORT TRUST
(A COMPANY LIMITED BY GUARANTEE)

NOTES TO THE FINANCIAL STATEMENTS
FOR THE YEAR ENDED 31 MARCH 2023

2. INCOME FROM DONATIONS AND GRANTS

	Unrestricted funds 2023 £	Restricted funds 2023 £	Total funds 2023 £	Total funds 2022 £
Donations	-	15,000	15,000	-
Grants	487,136	1,128,062	1,615,198	2,043,811
	<u>487,136</u>	<u>1,143,062</u>	<u>1,630,198</u>	<u>2,043,811</u>
TOTAL 2022	<u>259,417</u>	<u>1,784,394</u>	<u>2,043,811</u>	

WEST OF ENGLAND SPORT TRUST
(A COMPANY LIMITED BY GUARANTEE)

NOTES TO THE FINANCIAL STATEMENTS
FOR THE YEAR ENDED 31 MARCH 2023

3. INCOME FROM CHARITABLE ACTIVITIES

	Unrestricted funds 2023 £	Restricted funds 2023 £	Total funds 2023 £	Total funds 2022 £
Core and operational services	3,028	-	3,028	15,778
Tennis	142,872	-	142,872	113,600
Grant funding	-	1,920	1,920	-
	<u>145,900</u>	<u>1,920</u>	<u>147,820</u>	<u>129,378</u>
TOTAL 2022	<u>126,494</u>	<u>2,884</u>	<u>129,378</u>	

4. INVESTMENT INCOME

	Unrestricted funds 2023 £	Total funds 2023 £	Total funds 2022 £
Interest on deposit accounts	17,854	17,854	1,234
	<u>1,234</u>	<u>1,234</u>	
TOTAL 2022	<u>1,234</u>	<u>1,234</u>	

5. OTHER INCOMING RESOURCES

	Unrestricted funds 2023 £	Total funds 2023 £	Total funds 2022 £
Pension income	-	-	91,767
	<u>91,767</u>	<u>91,767</u>	
TOTAL 2022	<u>91,767</u>	<u>91,767</u>	

WEST OF ENGLAND SPORT TRUST
(A COMPANY LIMITED BY GUARANTEE)

NOTES TO THE FINANCIAL STATEMENTS
FOR THE YEAR ENDED 31 MARCH 2023

6. ANALYSIS OF EXPENDITURE ON CHARITABLE ACTIVITIES

Summary by fund type

	Unrestricted funds 2023 £	Restricted funds 2023 £	Total 2023 £	Total 2022 £
Core and operational services	442,957	-	442,957	253,192
Sport England	-	562,338	562,338	881,666
NGB projects	-	-	-	1,473
Grant funding	-	974,677	974,677	235,859
Tennis	135,004	-	135,004	97,375
	<u>577,961</u>	<u>1,537,015</u>	<u>2,114,976</u>	<u>1,469,565</u>
TOTAL 2022	<u>391,347</u>	<u>1,078,218</u>	<u>1,469,565</u>	

7. ANALYSIS OF EXPENDITURE BY ACTIVITIES

	Activities undertaken directly 2023 £	Support costs 2023 £	Total funds 2023 £	Total funds 2022 £
Core and operational services	361,682	81,275	442,957	253,192
Sport England	550,577	11,761	562,338	881,666
NGB projects	-	-	-	1,473
Grant funding	962,089	12,588	974,677	235,859
Tennis	126,038	8,966	135,004	97,375
	<u>2,000,386</u>	<u>114,590</u>	<u>2,114,976</u>	<u>1,469,565</u>
TOTAL 2022	<u>1,355,878</u>	<u>113,687</u>	<u>1,469,565</u>	

WEST OF ENGLAND SPORT TRUST
(A COMPANY LIMITED BY GUARANTEE)

NOTES TO THE FINANCIAL STATEMENTS
FOR THE YEAR ENDED 31 MARCH 2023

7. ANALYSIS OF EXPENDITURE BY ACTIVITIES (CONTINUED)

ANALYSIS OF DIRECT COSTS

	Core and operational services 2023 £	Sport England 2023 £	NGB projects 2023 £	Grant funding 2023 £
Staff costs	349,177	88,320	-	153,342
Delivery costs	12,505	462,257	-	808,747
Grants for delivery	-	-	-	-
	<u>361,682</u>	<u>550,577</u>	<u>-</u>	<u>962,089</u>
TOTAL 2022	<u>168,632</u>	<u>870,860</u>	<u>1,473</u>	<u>228,801</u>
		Tennis 2023 £	Total funds 2023 £	Total funds 2022 £
Staff costs		53,580	644,419	530,127
Delivery costs		72,458	1,355,967	125,999
Grants for delivery		-	-	699,752
		<u>126,038</u>	<u>2,000,386</u>	<u>1,355,878</u>
TOTAL 2022		<u>86,112</u>	<u>1,355,878</u>	

WEST OF ENGLAND SPORT TRUST
(A COMPANY LIMITED BY GUARANTEE)

NOTES TO THE FINANCIAL STATEMENTS
FOR THE YEAR ENDED 31 MARCH 2023

7. ANALYSIS OF EXPENDITURE BY ACTIVITIES (CONTINUED)

ANALYSIS OF SUPPORT COSTS

	Core and operational services 2023 £	Sport England 2023 £	Grant funding 2023 £	Tennis 2023 £	Total funds 2023 £	Total funds 2022 £
General management (inc. office and staff expenses)	48,628	6,059	6,353	8,542	69,582	65,942
Marketing and communications	277	-	3,926	424	4,627	845
Consultancy	23,184	5,702	2,309	-	31,195	33,828
Governance	9,186	-	-	-	9,186	13,072
	<u>81,275</u>	<u>11,761</u>	<u>12,588</u>	<u>8,966</u>	<u>114,590</u>	<u>113,687</u>
TOTAL 2022	<u>84,560</u>	<u>10,806</u>	<u>7,058</u>	<u>11,263</u>	<u>113,687</u>	

8. AUDITORS' REMUNERATION

	2023 £	2022 £
Fees payable to the Charity's auditor in respect of:		
Auditors' remuneration - audit	5,000	4,500
Auditors' remuneration - other services	2,000	1,500
	<u>7,000</u>	<u>6,000</u>

During the year, no Trustees received any remuneration (2022: £Nil).

During the year, no Trustees received any benefits in kind (2022: £Nil).

During the year, no Trustees received reimbursement of expenses (2022: £Nil).

During the year one Trustee provided consultancy services totalling £960 to the Charity for delivery of workshops at Health events.

9. STAFF COSTS

	2023 £	2022 £
Wages and salaries	500,394	408,841
Social security costs	45,943	35,845
Contribution to defined contribution pension schemes	98,082	85,441
	<u>644,419</u>	<u>530,127</u>

**WEST OF ENGLAND SPORT TRUST
(A COMPANY LIMITED BY GUARANTEE)**

**NOTES TO THE FINANCIAL STATEMENTS
FOR THE YEAR ENDED 31 MARCH 2023**

9. STAFF COSTS (CONTINUED)

The average number of persons employed by the Charity during the year was as follows:

	2023	2022
	No.	No.
Senior Management Team	2	2
Development officers and administration	15	13
	<u>17</u>	<u>15</u>

The number of employees whose employee benefits (excluding employer pension costs) exceeded £60,000 was:

	2023	2022
	No.	No.
In the band £70,001 - £80,000	1	-
In the band £80,001 - £90,000	-	1

10. TRUSTEES' INDEMNITY INSURANCE

During the year the charity paid £1,234 (2022: £1,176) for Trustee indemnity insurance.

11. DEBTORS

	2023	2022
	£	£
DUE WITHIN ONE YEAR		
Trade debtors	188,293	297
Prepayments and accrued income	9,868	6,810
	<u>198,161</u>	<u>7,107</u>

WEST OF ENGLAND SPORT TRUST
(A COMPANY LIMITED BY GUARANTEE)

NOTES TO THE FINANCIAL STATEMENTS
FOR THE YEAR ENDED 31 MARCH 2023

12. CREDITORS: AMOUNTS FALLING DUE WITHIN ONE YEAR

	2023	2022
	£	£
Trade creditors	27,215	72,788
Other taxation and social security	9,793	10,471
Pension fund loan payable	6,645	26,499
Accruals and deferred income	229,574	21,950
	<u>273,227</u>	<u>131,708</u>

**WEST OF ENGLAND SPORT TRUST
(A COMPANY LIMITED BY GUARANTEE)**

**NOTES TO THE FINANCIAL STATEMENTS
FOR THE YEAR ENDED 31 MARCH 2023**

13. STATEMENT OF FUNDS

STATEMENT OF FUNDS - CURRENT YEAR

	Balance at 1 April 2022 £	Income £	Expenditure £	Balance at 31 March 2023 £
UNRESTRICTED FUNDS				
Wesport Core and Operational	293,758	508,018	(442,957)	358,819
Tennis	43,942	142,872	(135,004)	51,810
	<u>337,700</u>	<u>650,890</u>	<u>(577,961)</u>	<u>410,629</u>
RESTRICTED FUNDS				
Sport England	71,550	680,624	(562,337)	189,837
NGB Projects	-	-	-	-
Other Grant Funding	143,561	464,358	(432,880)	175,039
Ageing Well Fund	579,770	-	(436,645)	143,125
COMF	123,100	-	(105,153)	17,947
	<u>917,981</u>	<u>1,144,982</u>	<u>(1,537,015)</u>	<u>525,948</u>
TOTAL OF FUNDS	<u><u>1,255,681</u></u>	<u><u>1,795,872</u></u>	<u><u>(2,114,976)</u></u>	<u><u>936,577</u></u>

Sport England – this is funding received for programmes including Children & Young People, Workforce, Tackling Inequalities, Opening School Facilities, and Data & Insight.

Other Grant Funding – this is funding received for various projects including support for a sports coaching apprenticeship scheme, Green Social Prescribing grants, Crime Prevention Through Sport grants and the delivery of yoga in parks.

Ageing Well fund – this is grant funding to be used to utilise the momentum created through the Live Longer Better movement to take a system-wide approach to the Ageing Well project.

Contain Outbreak Management Fund (COMF) – this is grant funding to use physical activity and movement as a tool to deliver a targeted intervention with the power to both protect vulnerable sections of the population from the effects of further outbreaks and to assist recovery by improving physical and mental health, advancing individual lives and bringing communities together

**WEST OF ENGLAND SPORT TRUST
(A COMPANY LIMITED BY GUARANTEE)**

**NOTES TO THE FINANCIAL STATEMENTS
FOR THE YEAR ENDED 31 MARCH 2023**

13. STATEMENT OF FUNDS (CONTINUED)

STATEMENT OF FUNDS - PRIOR YEAR

	Balance at 1 April 2021 £	Income £	Expenditure £	Balance at 31 March 2022 £
UNRESTRICTED FUNDS				
Wesport Core and Operational	181,637	365,312	(253,191)	293,758
Tennis	27,718	113,600	(97,376)	43,942
	<u>209,355</u>	<u>478,912</u>	<u>(350,567)</u>	<u>337,700</u>
RESTRICTED FUNDS				
Sport England	119,496	833,721	(881,667)	71,550
NGB Projects	1,473	-	(1,473)	-
Other Grant Funding	128,732	149,457	(134,628)	143,561
Ageing Well Fund	-	594,000	(14,230)	579,770
COMF	-	210,100	(87,000)	123,100
	<u>249,701</u>	<u>1,787,278</u>	<u>(1,118,998)</u>	<u>917,981</u>
TOTAL OF FUNDS	<u><u>459,056</u></u>	<u><u>2,266,190</u></u>	<u><u>(1,469,565)</u></u>	<u><u>1,255,681</u></u>

14. ANALYSIS OF NET ASSETS BETWEEN FUNDS

ANALYSIS OF NET ASSETS BETWEEN FUNDS - CURRENT YEAR

	Unrestricted funds 2023 £	Restricted funds 2023 £	Total funds 2023 £
Current assets	493,549	716,255	1,209,804
Creditors due within one year	(82,920)	(190,307)	(273,227)
TOTAL	<u><u>410,629</u></u>	<u><u>525,948</u></u>	<u><u>936,577</u></u>

WEST OF ENGLAND SPORT TRUST
(A COMPANY LIMITED BY GUARANTEE)

NOTES TO THE FINANCIAL STATEMENTS
FOR THE YEAR ENDED 31 MARCH 2023

14. ANALYSIS OF NET ASSETS BETWEEN FUNDS (CONTINUED)

ANALYSIS OF NET ASSETS BETWEEN FUNDS - PRIOR YEAR

	Unrestricted funds 2022 £	Restricted funds 2022 £	Total funds 2022 £
Current assets	420,727	966,662	1,387,389
Creditors due within one year	(83,027)	(48,681)	(131,708)
TOTAL	<u>337,700</u>	<u>917,981</u>	<u>1,255,681</u>

15. RECONCILIATION OF NET MOVEMENT IN FUNDS TO NET CASH FLOW FROM OPERATING ACTIVITIES

	2023 £	2022 £
Net income/expenditure for the year (as per Statement of Financial Activities)	<u>(319,104)</u>	<u>796,625</u>
ADJUSTMENTS FOR:		
Investment income received	(17,854)	(1,234)
Decrease/(increase) in debtors	(191,054)	16,546
Increase in creditors	141,519	42,031
NET CASH PROVIDED BY/(USED IN) OPERATING ACTIVITIES	<u>(386,493)</u>	<u>853,968</u>

16. ANALYSIS OF CASH AND CASH EQUIVALENTS

	2023 £	2022 £
Cash in hand	1,011,643	1,380,282
TOTAL CASH AND CASH EQUIVALENTS	<u>1,011,643</u>	<u>1,380,282</u>

**WEST OF ENGLAND SPORT TRUST
(A COMPANY LIMITED BY GUARANTEE)**

**NOTES TO THE FINANCIAL STATEMENTS
FOR THE YEAR ENDED 31 MARCH 2023**

17. ANALYSIS OF CHANGES IN NET DEBT

	At 1 April 2022	Cash flows	At 31 March 2023
	£	£	£
Cash at bank and in hand	1,380,282	(368,639)	1,011,643
Debt due within 1 year	(26,499)	19,854	(6,645)
	<u>1,353,783</u>	<u>(348,785)</u>	<u>1,004,998</u>

18. OPERATING LEASE COMMITMENTS

At 31 March 2023 the Charity had commitments to make future minimum lease payments under non-cancellable operating leases as follows:

	2023	2022
	£	£
Not later than 1 year	<u>9,500</u>	<u>8,530</u>

During the year £18,030 has been recognised in expenditure in relation to operating lease payments (2022: £17,060).

19. CHARITY INFORMATION

The West of England Sport Trust is a company limited by guarantee and a charity registered at the Charity Commission in England and Wales. The principal office is The University of the West of England, Frenchay Campus, Coldharbour Lane, Bristol, BS16 1QY.

